



Quick Release Mounts

4 Sim Rigs

Change your rig in seconds, spend more time in the game!

The QRMin System is designed for rapid mount and dismount of Pedals/Rudders on your rig

Note: you will need a QRMin Base Mount Kit x4 or x5 to use this adapter.

This kit contains:

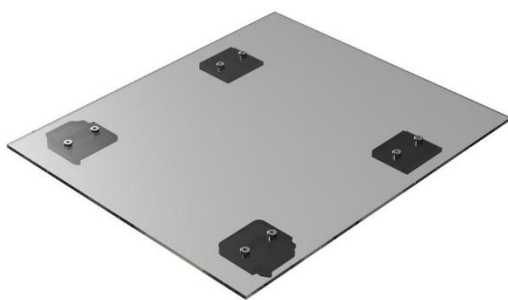
- 2x QRMin Universal QR Plates (left/right)
- 2x QRMin Hook Plates
- 1:1 scale printed drilling template
- 8x Screws (if chosen)

This QRMin Universal Quick Release Footplate Kit is designed to mount to the base of a sheet of material rather than directly to your pedals, to allow quick mounting to and from your rig.

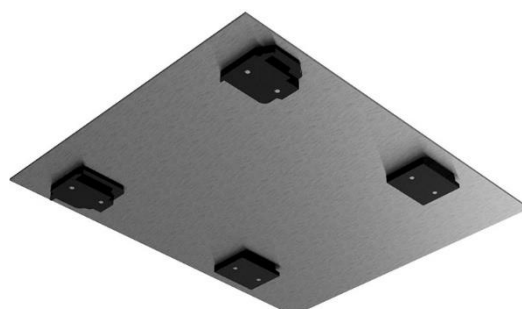
There are a lot of driving pedal and flight rudder sets available today and most have unique mountings that cannot directly translate to our QRMin Quick Release system so here at QR4rigs, with this kit we have now provided you with a way for you to easily swap out your pedal sets on your rig when swapping between Racing and Flight sims where we have not managed to design a direct solution.

These QRMin Universal Quick Release plates attach to any suitably strong sheet material which you will have to source, supply and attach your Pedal set to. The minimum footprint/size of the sheet to accommodate the QRMinUniQR plates should be:

- width (side to side): 324mm
- length (front to back): 304mm



Plexiglass Board shown for context only,
The Plexiglass Board is **NOT** Supplied in this kit



Stainless Steel Sheet shown for context only,
The Stainless Steel Sheet is **NOT** Supplied in this kit

Please ensure that this fits inside your rig on the foot plate and that the [QRMin Quick Release Base Mount Kit x4](#) fits on your rig's footplate (w: 364mm, l: 320mm) before purchase.

Drilling of the holes WILL be required. Drill the holes in your intermediate sheet for the QR Plates at 6.5mm (1/4") diameter.

The mounting holes for your pedals are Manufacturer and Model dependant but most will use 6.5mm (1/4") holes and M6 fixings with a few exceptions. Consult your User Manual supplied with your pedals for Mounting Hole dimensions.

We suggest the following minimum thickness of these example intermediate sheet materials:

- Steel Sheet (stainless or painted) 2 - 3mm (~1/8")
- Aluminium Tread Sheet 2.5 - 4mm (~3/16")
- Acrylic/Plexiglass 5 - 6mm (~1/4")
- Plywood >6mm (>1/4")

We DO NOT supply the intermediate sheet material as this would make shipping costs ridiculous, most local hardware stores and online sheet material suppliers can supply and ship directly to you and some provide a very cheap cutting service too.

Any images showing the intermediate sheets are for CONTEXT ONLY!

Screws are entirely optional and not included unless you choose a size when adding to the shopping cart.

We do however supply a 1:1 scale accurate printed drawing you can affix to your sheet material to help you mark out the holes for the QR Plates.

Some mounting screws of various types are optional to purchase, we strongly recommend that 6-8mm of the M6 thread is threaded into the QR Plate, please ensure that you add the thickness of your material to this to work out which screws you will need.

Examples of recommended fixing types/lengths:

- 3mm (1/8") Steel sheet = 10mm Flat head CAP Screws
- 4mm (3/16") Aluminium sheet = 12mm Flat head CAP Screws
- 6mm (1/4") Acrylic/Plexiglass sheet = 14mm Flat head CAP Screws
- 9mm (3/8") Plywood sheet = 16mm CAP Screws c/w 1mm washer or 16mm CSK Screws

You can choose to add these to your order or to supply these yourself of course.

As there are a plethora of pedal sets out there, we do not supply any fitting instructions aside from what is in this document.

If you require further support, please use the [contact form on our website](#), or email us directly support@qr4rigs.com, we will be more than happy to help you.

