



# Quick Release Mounts

## 4 Sim Rigs

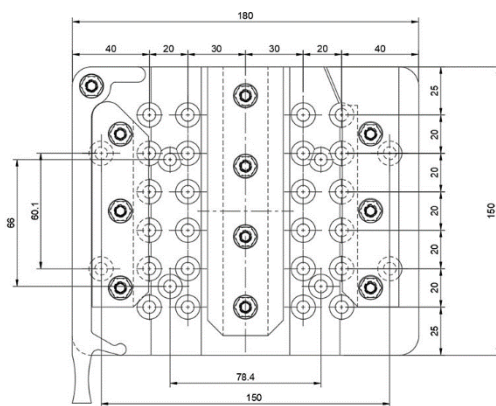
*Change your rig in seconds, spend more time in the game!*

**The QRMax System is designed for rapid mount/dismount of controllers to/from your rig**

### Before Fitting your QRMax Base Mount to your rig...

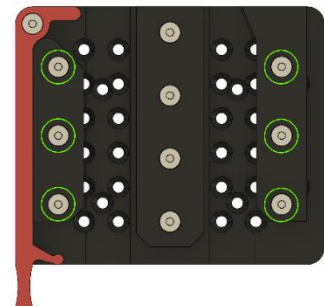
#### Noteworthy points:

- All QR4rigs Base Mounts come fully assembled as they are checked by Quality Control to ensure they perform as expected. If you remove the dovetail guides at any point, you may have to tweak the tightness of the screws to get a satisfactory fit.



- There is no need to disassemble the QRMax Base Mount when using most of the mounting holes, including the 78.4mm x 66mm holes that should fit on to most racing-based rig's wheel tables without the need for drilling.
- To access the outermost mounting holes, you will need to remove the outer dovetail guides.
- Most of the mounting holes (shown left) are at 20mm centers, giving you plenty of choice of position when mounting to an Aluminium Profile rig.
- The QRMax Base Mount is 180mm wide x 150mm deep.

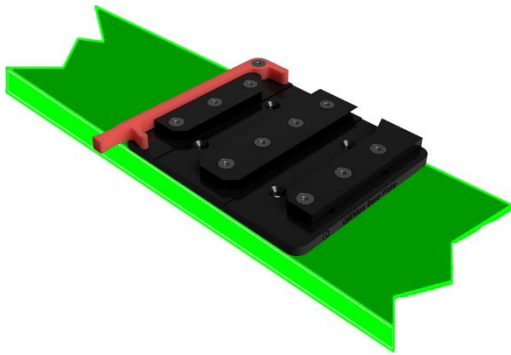
- You should choose at least 4 fixing points with the furthest distance between them that you can use to anchor the base mount to your rig.
- The T-Nuts provided in the 40-series Profile Fixing Kit are 'drop-in' type, meaning they can be dropped into a slot without removal of end plates. Simply engaging the thread and starting to tighten the screw slowly should rotate the T-Nut into position at 90 degrees to the slot.
- QRMax Base Mounts are designed to have the QR Plate engaged from the rear of the rig to the front of the rig. (holding the wheel/yoke in front of you and pushing it away to engage on the QRMax Base Mount).
- If you wish to use the outer most mounting holes, please follow these preliminary steps:
  - o There are nuts on the underside of the QRMax Base Mount, so put the base mount on a flat surface before carrying out the disassembly.
  - o Temporarily remove the 6x M6x16mm screws from the outer dovetail guides (**marked with green circles**)
  - o Put the dovetail guides aside, noting the orientation and placement on the base.
  - o Put the 6x M6x16 screws back in loosely and rotate them a couple of times, this will keep the nuts in place whilst you move it around, which will be helpful shortly. Ensure the Screws do not protrude past the end of the nuts.



## Fitting your QRMax Base Mount to your wheel/yoke table on your rig

- *NOTE: You will need the QRMax Std Fixing Kit for this section*

- Decide where you want the QRMax Base Mount to be on your wheel/yoke table.



- The forward edge (with the QR Lever handle sticking out) of the QRMax Base Mount needs to be close to the edge of the wheel/yoke table you are attaching to in most instances.

- If necessary, drill 4x 6.5 dia. holes in your table to suit the mounting holes you have chosen.

- Secure the QRMax Base Mount 40 in your desired position on your rig with the provided 4x M6x18mm Countersunk screws through the Base Mount and

table into the M6 Washers and M6 Nylock Nuts underneath.

- You will need to hold the Nuts with a 10mm spanner as there will be resistance from the Nylock part of the nut.

- Finalise the position and tighten to the pinch + 1/4 turn.

## Fitting your QRMax Base Mount to 40 Series Aluminium Extrusion

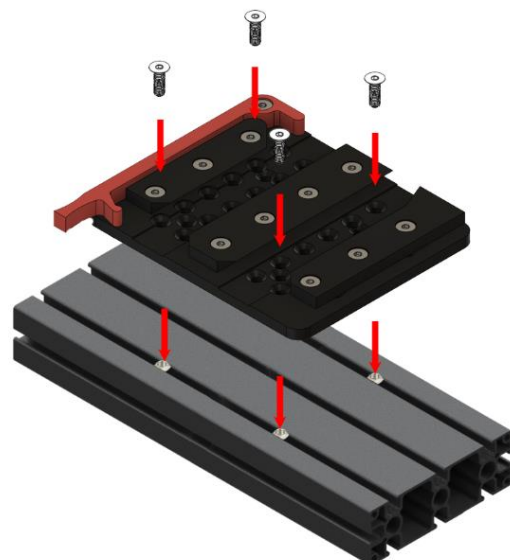
- *NOTE: You will need the QRMax 40-Series Profile Fixing Kit for this section*

- Method 1: Drop-in the provided 4x T-nuts into the slot of the Aluminium Extrusion (40/120 recommended minimum) and get them roughly where you want the QRMax Base Mount to be. Method 2: loosely fit the screws through the Base Mount and spin the T-Nuts on a few turns.

- Secure the Base Mount in your desired position on your Extrusion based rig with the 4x M6x18mm Countersunk screws provided.

- Tighten to the pinch then back off a bit.

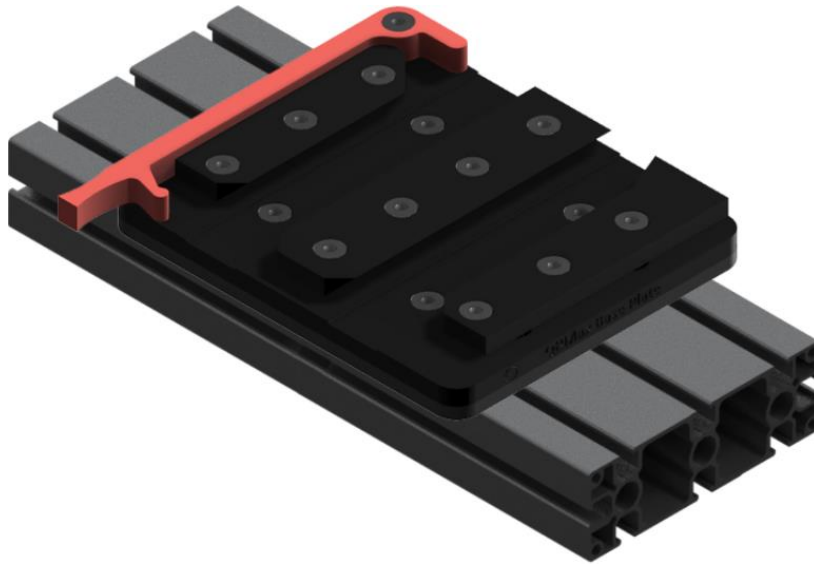
- Finalise the position and tighten to the pinch + 1/4 turn



**DO NOT overtighten any of the screws as you may damage the threads or deform the material.**

If you require further support, please use the [contact form on our website](#), or email us directly [support@qr4rigs.com](mailto:support@qr4rigs.com), we will be more than happy to help you.

- If you removed the guides earlier then remove the 6x M6x16mm Screws that you put back in loosely earlier to retain the nuts.
- Put the dovetail guides back in place noting their original orientation and secure with the 6x M6x16mm Screws
- Test the QR action with a suitable QR Plate to ensure you have the dovetails guides in the right position and adjust accordingly if required by loosening the screws ¼ turn and trying the plate again.
- When required QR action has been achieved, tighten the screws 1/8<sup>th</sup> turn and try the QR Plate again. This should be the final position.



If you require further support, please use the [contact form on our website](#), or email us directly [support@qr4rigs.com](mailto:support@qr4rigs.com), we will be more than happy to help you.

