



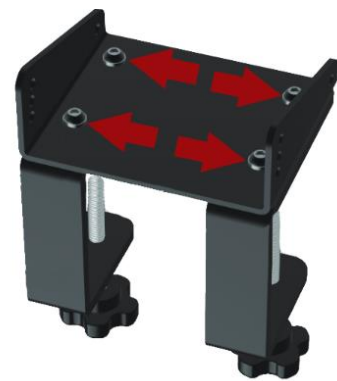
**The QRMax System is designed for rapid mount/dismount of controllers to the wheel deck on your rig!**

**Note: you will need a QRMax Base Mount and the CAMMUS Desk Clamp to use this adapter.**

### Fitting your QRMax CAMMUS C5 Quick Release Plate

You will need to prepare your CAMMUS desk clamp (not supplied)

1. If already assembled, you will need to remove the top Bracket from the CAMMUS Desk Clamp. (see [user manual](#))
2. Using an Allen key, unscrew the 4 dome head screws holding the 'G' Clamps in place.
3. Put the screws and the 'G' clamps in a safe place in case you ever need to revert to the original configuration in the future.
4. Use the M6x14mm CAP Head screws and M6 washers supplied in the QRMax CAMMUS C5 Quick Release Plate Kit to attach the desk bracket to the top of the QRMax CAMMUS C5 Quick Release Plate utilising the same 4 holes you removed the 4 dome head screws from previously. There are 4x M6 Nuts embedded in the QR plate to screw in to.
5. Do not overtighten the screws, but make sure they are secure.



Once mounted and the desk clamp put back together, the assembly should look like the above picture.

If you require further support, please use the [contact form on our website](#), or email us directly [support@qr4rigs.com](mailto:support@qr4rigs.com), we will be more than happy to help you.