



# Quick Release Mounts

## 4 Sim Rigs

*Change your rig in seconds, spend more time in the game!*

**The QRMax System is designed for rapid mount/dismount of controllers on your rig!**

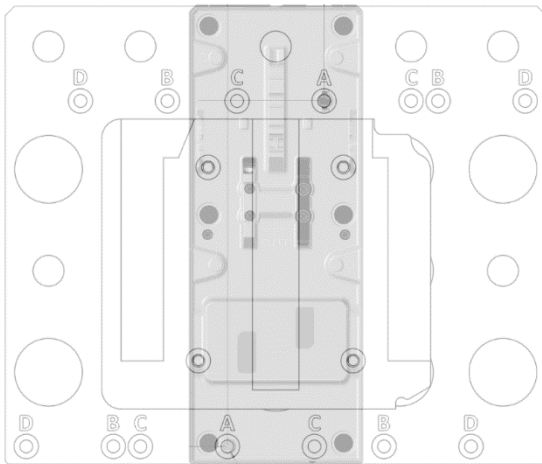
**Note: you will need a QRMax Base Plate to use this adapter.**

### Fitting the QRMax Thrustmaster TCA Airbus Throttle Quick Release Plate Kit

This adapter is designed to fit to all TCA Airbus Throttle configurations.

For the **TCA Quadrant Airbus Edition** (without the Add-Ons) use the holes marked 'A' on the base of the Adapter plate.

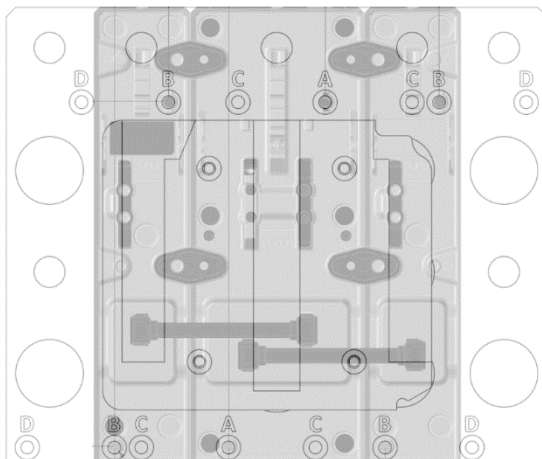
- Flip over the TCA Quadrant and align the QR/Adapter plate assembly as shown.



- Use 2x M6x22mm Countersunk Screws through the base of the Adapter Plate's holes marked 'A' and fix into the base of the TCA Quadrant. \*Tighten to the pinch only!
- The Adapter Plate is wider than the TCA Quadrant in this configuration to allow you to expand your set up in the future.

For the **TCA Quadrant Airbus Edition** (with the Add-Ons), use the holes marked 'A' & 'B' on the base of the Adapter plate.

- Flip over the TCA Quadrant assembly and align the QR/Adapter plate assembly as shown.

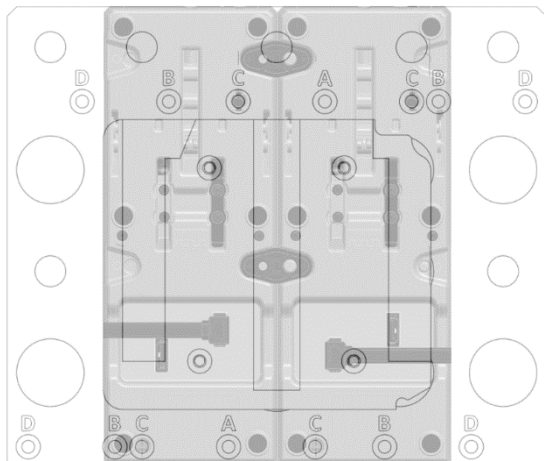


- Loosen slightly the screws holding the diamond shaped plates so that the assembly levels itself out.
- Use 6x M6x22mm Countersunk Screws through the base of the Adapter Plate's holes marked 'A' & 'B' and fix into the base of the TCA Quadrant. \*Tighten to the pinch only!
- The Adapter Plate is wider than the TCA Quadrant in this configuration to allow you to expand your set up in the future.



For **Quad Throttle 2x TCA Quadrants (without the Add-Ons)**, use the holes marked 'C' on the base of the Adapter plate.

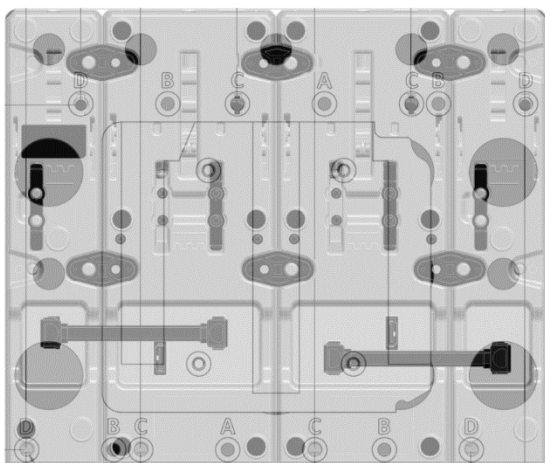
- Flip over the TCA Quadrant assembly and align the QR/Adapter plate assembly as shown.



- Loosen slightly the screws holding the diamond shaped plates so that the assembly levels itself out.
- Use 4x M6x22mm Countersunk Screws through the base of the Adapter Plate's holes marked 'C' and fix into the base of the TCA Quadrant. \*Tighten to the pinch only!
- The Adapter Plate is wider than the TCA Quadrant in this configuration to allow you to expand your set up in the future.

For **Quad Throttle 2x TCA Quadrants (with the Add-Ons)**, use the holes marked 'C' & 'D' on the base of the Adapter plate.

- Flip over the TCA Quadrant assembly and align the QR/Adapter plate assembly as shown.



- Loosen slightly the screws holding the diamond shaped plates so that the assembly levels itself out.
- Use 8x M6x22mm Countersunk Screws through the base of the Adapter Plate's holes marked 'C' & 'D' and fix into the base of the TCA Quadrant. \*Tighten to the pinch only!

**\*NOTE: DO NOT OVERTIGHTEN any of the screws or you may distort the Adapter Plate!**

*Happy Flying!*

If you require further support, please use the [contact form on our website](#), or email us directly [support@qr4rigs.com](mailto:support@qr4rigs.com), we will be more than happy to help you.