



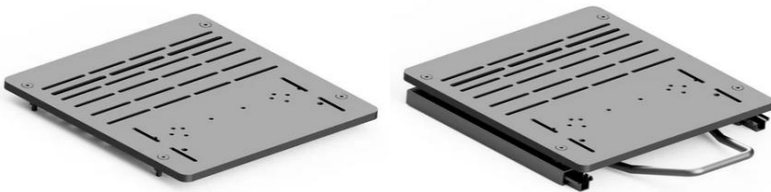
# Quick Release Mounts **for** Sim Rigs

# QR4rigs®

Change your rig in seconds, spend more time in the game!

The QRMin System is designed for rapid mount and dismount of Rudder Pedals and Racing Pedals to and from your rig

Before Fitting the QRMin Quick Release Base Mount Sim-Lab Kit x4 to your Sim-Lab Pedal Base Plate



**IMPORTANT:** The QRMin Quick Release Base Mount Sim-Lab Kit x4 fits to the Sim-Lab Pedal Base Plate with or without the slider, but if you do have the slider, you will need to install this first as the QRMin Base Mounts will obscure the fixings.

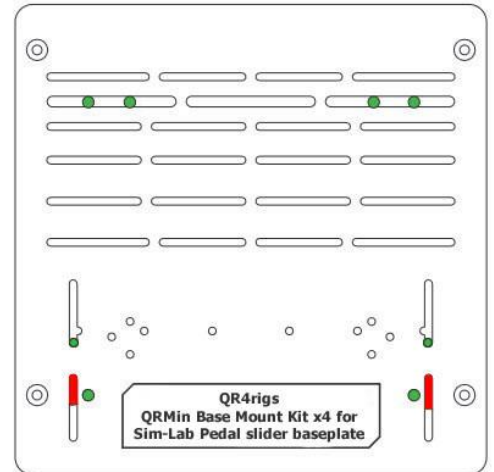
**NOTE:** The QRMin Quick Release Base Mount Sim-Lab Kit x4 is specifically designed to fit the Sim-Lab Pedal Base Plate and will not fit other base plates. This kit is **NOT** compatible with the Sim-Lab Heel plate option.

Fitting the QRMin Quick Release Base Mount Sim-Lab Kit x4 to your Sim-Lab Pedal Base Plate

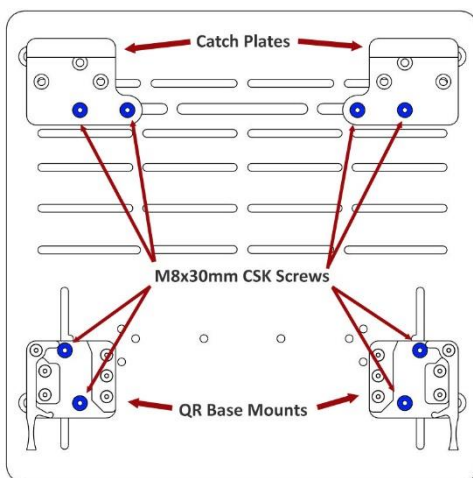
The QR Base Mounts and Catch Plates fit to the Sim-Lab Pedal Base Plate in only 1 way.

The fixing points are shown for reference on the right in **Green**.

The QR Base Mounts have a key on their bases that fit into the slots at the bottom of the Pedal Base Plate shown on the right in **RED**.



Mounting Hole positions



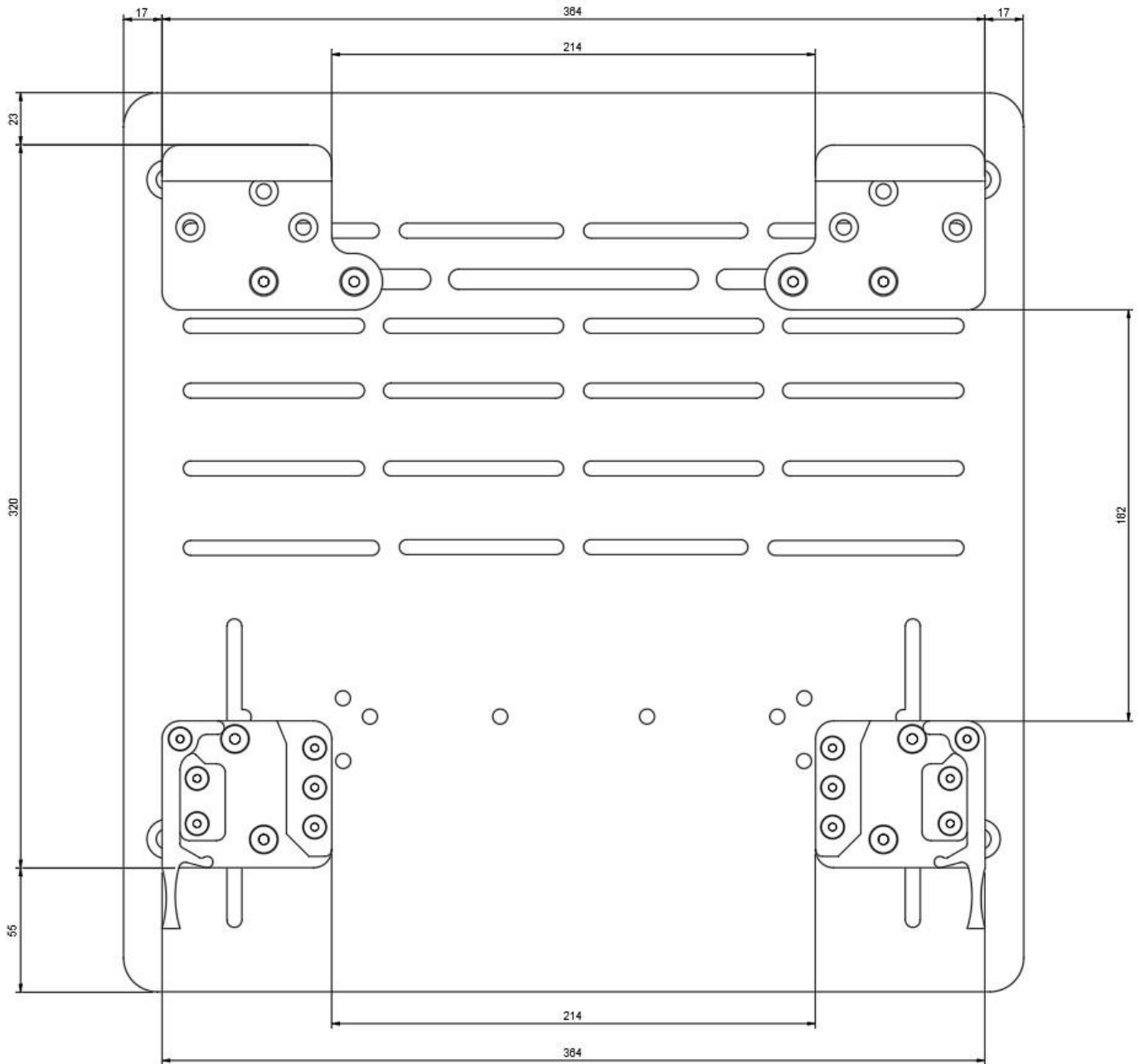
QR Plates, Catch Plates & Mounting Screws

The picture on the left shows the QR Base Mounts (lower part of the picture) and Catch Plates (upper part of the picture) installed to the Pedal Base Plate.

Align the Key on the bottom of the QR Base Plate with the lower slot and push into place against the top of the lower slot. Position the Catch Plates so the outer edge is aligned with the outer edge of the QR Base Mount.

Pass the 8 M6x30mm CSK Screws, through the mounting holes shown in **BLUE** and secure with the Washers and Nylock Nuts supplied in the fixing kit. Tighten well, but no need to use brute force.

Measurements for reference are on the following page.



*Measurements for reference*

If you require further support, please use the [contact form on our website](#), or email us directly [support@qr4rigs.com](mailto:support@qr4rigs.com), we will be more than happy to help you.