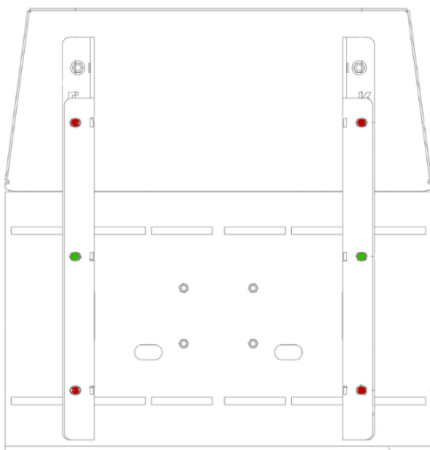




The QRMin System is designed for rapid mount and dismount of Rudder Pedals and Racing Pedals to and from your rig

Note: you will need a QRMin Base Plate Kit x4 or above to use this Kit

Fitting the QRMin HU+ Quick Release Plate Kit to your Heusinkveld Ultimate+ Baseplate



- Flip over the Heusinkveld Ultimate+ Baseplate so you can see the underside of the base.
- Identify the 4x fixing points on the underside of the Baseplate rails shown in **RED** to the left.
- Also identify the 2x middle fixing points shown in **GREEN** for later reference.

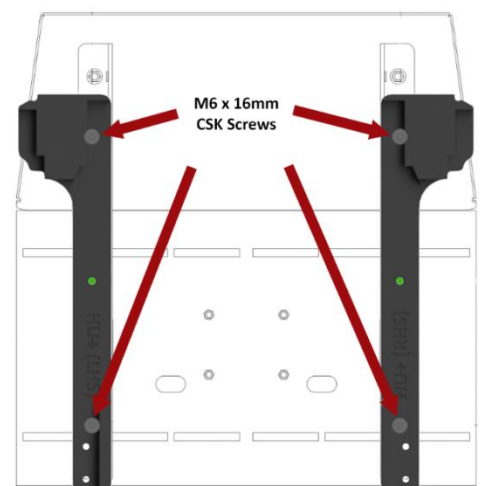
- The QRMin HU+ QR Plate Kit comes in 6 pieces. The 4 main pieces have identification marks on them to help you fit them to your HU+ Baseplate correctly.

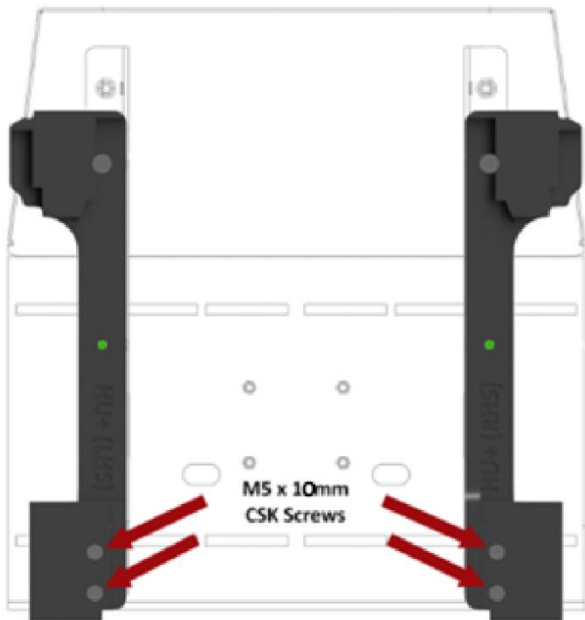
- The identifiers for the QR Plates (the larger pieces) are on the underside.

- Align the 2 larger pieces as shown in the picture on the right.

- Fix in place using 4x M6x16mm Countersunk screws through the rails and add the M6 washers and M6 Nuts provided.

- **Do not fully tighten at this stage. You will need to align them a little later on!**

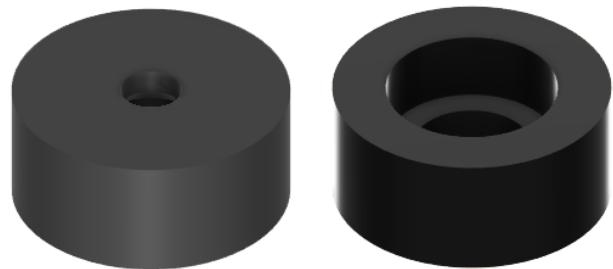




- The identifier for the Hook Plates is on the outside edge of each piece.
- Line up the Hook Plates as shown on the left, noting the orientation.
- Fix in place with 4x M5x10mm CSK screws provided as shown. Tighten to the pinch and then 1/16th turn only.

- The rails on the HU+ Baseplate are elliptical in nature so correct alignment is critical.
- With the fixings just loose enough for the plates to move slightly on the rails to self-align, fit the assembly to the QRMin Base Mount Kit on your rig.
- Nip up the Nuts. You will need to remove the assembly carefully from the base mounts so as not to disturb the positioning before tightening the screws and nuts up fully. It can be a bit fiddly to get the fit right on the first attempt, so you will need some patience.

- Optionally, you can now fit the circular feet (right) to the central holes (highlighted in **GREEN in the picture** above) to provide optimum support if you have a footplate underneath.



- Use the 2x M6x22mm CSK screws and secure through the foot assembly with the M6 Washers and M6 Nuts provided.
- **Note: The base plate assembly will not sit flat with the optional feet installed when not installed on your rig.**

You are all set, see you on the grid!

Remember: DO NOT OVERTIGHTEN the screws.