



Quick Release Mounts **for** Sim Rigs

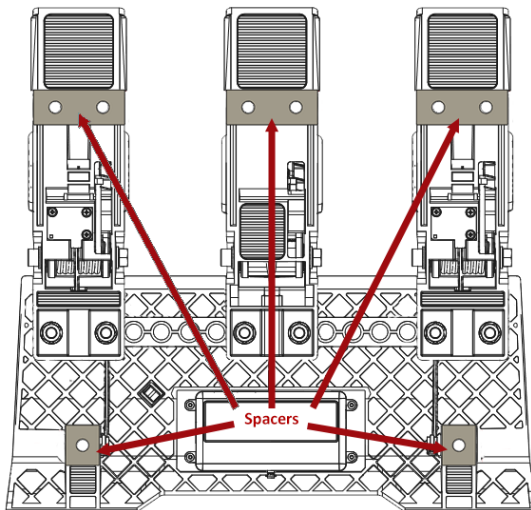
QR4rigs®

Change your rig in seconds, spend more time in the game!

The QRMin System is designed for rapid mount and dismount of Rudder Pedals and Racing Pedals to and from your rig

Fitting the QRMinSteel CSL Elite Quick Release Plate Kit to your Fanatec CSL Elite Pedals

The kit comes partially assembled. There are extra fixings included to cater for many pedal configurations.



In our example we will install the pedals in the standard configuration of equally spaced. You may install the pedals in your desired configuration but will need to choose the appropriate fixings.

IMPORTANT: Remove the backing from the self-adhesive tape on the spacers and affix them on to the bottom of the pedals and heel plate lining them up with the associated holes as shown left **BEFORE** fitting anything to the QRMinSteel Plate.

Rules

When installing the kit, you MUST observe the following rules:

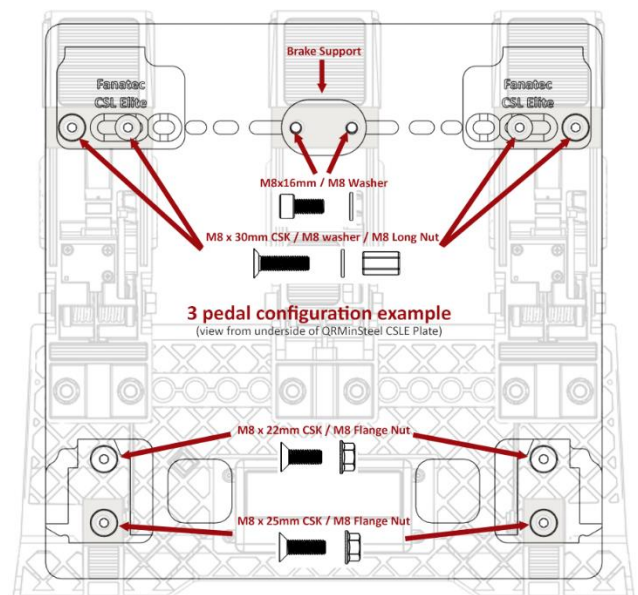
- Each of the QR Plates and Hook Plates must use 2 sets of fixings
- Each pedal must have at least 1 rear fixing set installed.
- It may not be possible to use 2 fixing sets at the rear of all pedals in your desired configuration, 1 will suffice.

Looking from the underside, the arrangement of the QR Plates and Hook Plates is shown here (below) for reference.

The QR Plates are already installed in the correct orientation with the M8x22mm CSK Screws and flange nuts, these will need a final tighten later on.

Offer the QRMinSteel assembly up to the base of the pedal set, aligning the holes with the 2 mounting holes in the heel plate and pass both of the M8x25mm CSK screws through the assembly and in to the recess in the heel plate. Fix in place loosely with an M8 Flange nut on each. Do NOT use washers on the flange nuts.

Align the Hook plates as shown right, at the top of the picture.



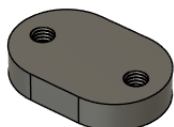
IMPORTANT: The hook plates **MUST** be fixed in this position regardless of where you position your pedals.

Fix each Hook Plate in position and in this configuration example, use the M8x30mm CSK Screws, pushed through the assembly and the rear holes of the outer Pedals as shown and fix with a washer and M8 Long Nut on each, finger tight only at this stage.

Ensure the Hook Plates are 'square' with the QRMinSteel Plate and tighten all the screws and nuts. You will need a 5mm Hex Key for the Screws, a 11mm socket or spanner for the Long Nuts.

Keep the QR Plates aligned with each outer edge of the QRMinSteel Plate and tighten the 4 Screws with a 5mm Hex key. The flange nuts are serrated so should not require a spanner to hold them.

Brake Supports



There are 2 'Brake Supports' included in the kit.

Use the thinner Brake Support when you have a QRMin Base Mount Kit x5 or greater installed.

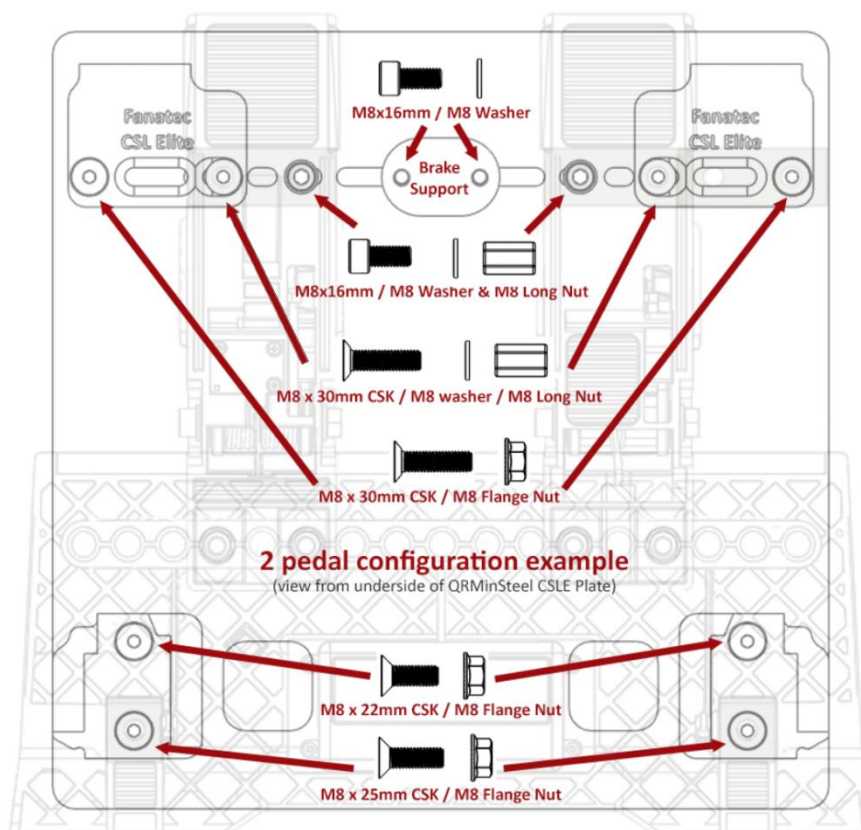
If you have only a QRMin Base Mount Kit x4 installed on your rig, use the thicker Brake Support.



If you are using 3 pedals, as in our example, the middle pedal (usually the Brake) is fixed in place with 1 or 2 M8x16mm CAP Head screws with a washer, from the top side of the assembly. These screw into the Brake Support directly and can be tightened up well. Do note, that excessive tightening is not necessary and will destroy the threads.

Another Configuration Example

There are many configurations of pedal. We have included some extra fixings to hopefully make your desired configuration possible.



If you require further support, please use the [contact form on our website](#), or email us directly support@qr4rigs.com, we will be more than happy to help you.