



Quick Release Mounts for Sim Rigs

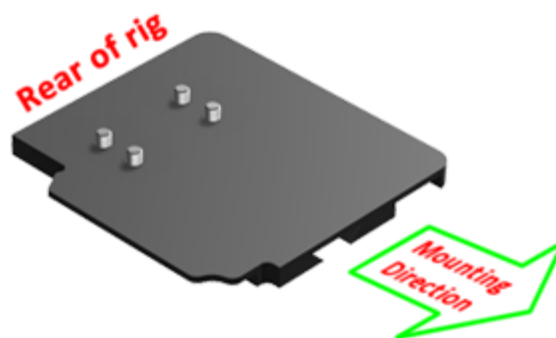
QR4rigs®

Change your rig in seconds, spend more time in the game!

The QRPro System is designed for rapid mount/dismount of controllers on your rig!

Note: you will need a QRPro Base Mount to use this adapter.

- The QRPro QR System is designed for controllers to mount from the rear of the rig towards the front by default, however you may want to mount your TH8A from a different direction as the shifter itself can be rotated within it's own shell.



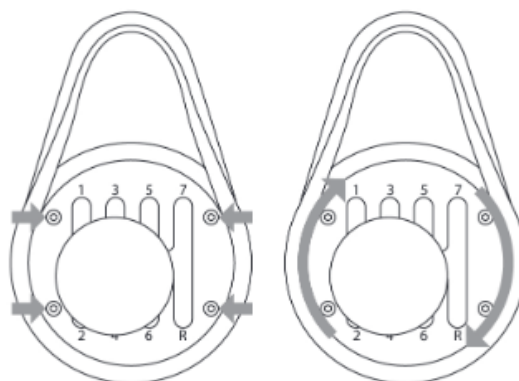
Before you fit your QRPro Thrustmaster TH8A Gearstick Quick Release Plate

POSITIONING AND ROTATING THE SHIFT PLATES (CAN BE ADJUSTED BY 360°)

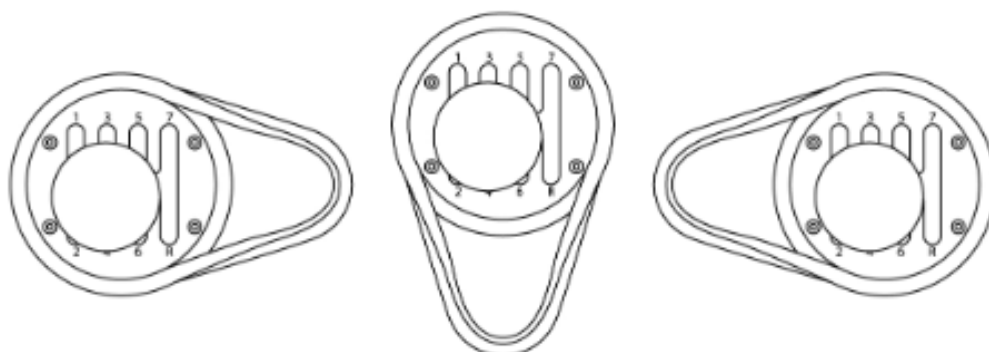
1. Using a 2.5 mm Allen key (included with the TH8A), slightly unscrew the 4 screws holding the shift plate in place.

The shift plate can now be rotated manually by 360°.

- For the purposes of these instructions, we will assume we want to mount the TH8A from the rear of the rig towards the front and therefore we will keep the default rotation and orientation of the TH8A as it comes out of the box as shown here.

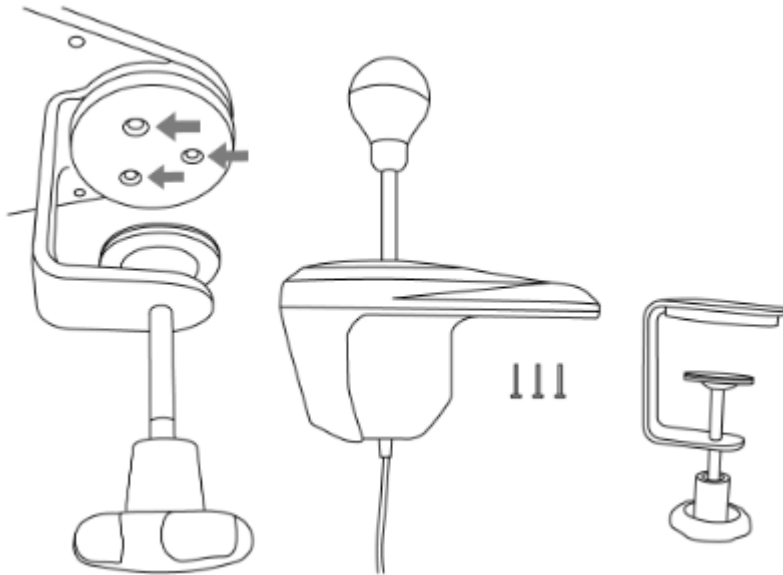


2. If you wish to change the orientation, select your preferred position along the 360° of rotation (3 examples are shown below, among the many other possibilities available).

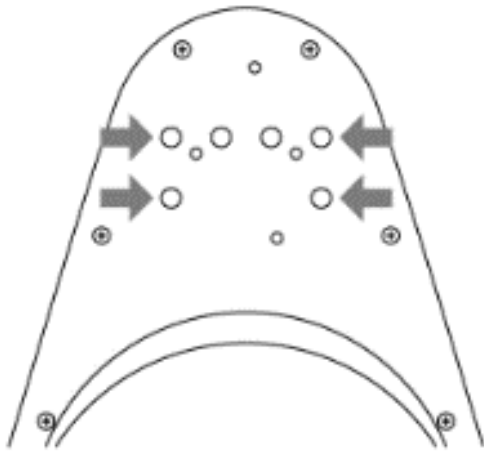


REMOVING THE CLAMP

1. Using a 2.5 mm Allen key, completely unscrew and remove the 3 screws holding the clamping system) in place. Detach the clamping system from the shifter.

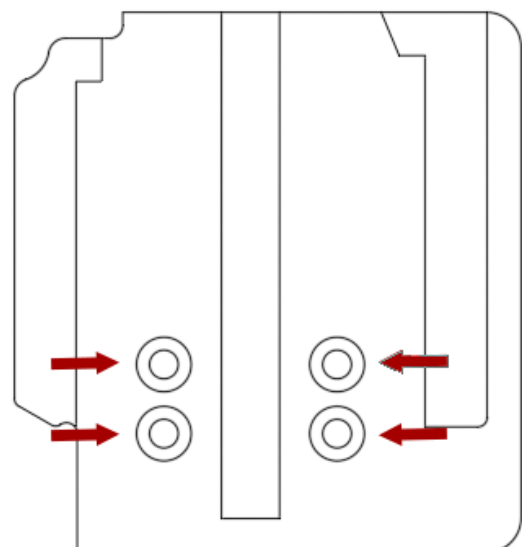


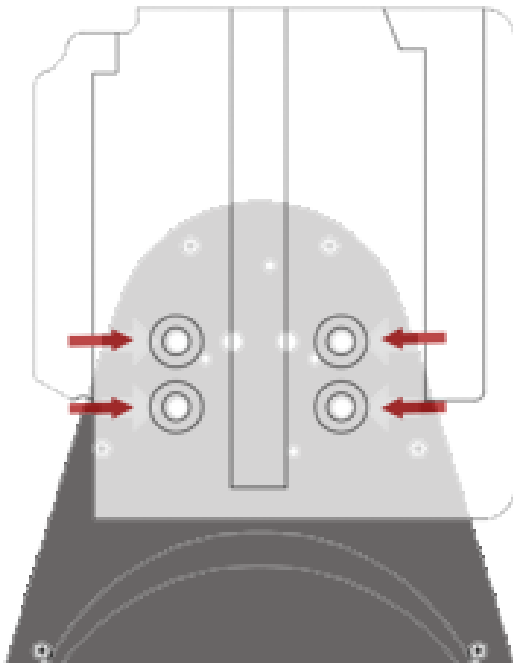
Fitting the QRPro Thrustmaster TH8A Gearstick Quick Release Plate Kit



- With your TH8A gearstick upside down and the clamp now removed you can now see and locate the 4 mounting holes in the body.

- Locate the fixing holes on the underside of the QRPro TH8A QR Plate.





- Align the QR Plate with the holes in the TH8A
- Note the orientation of the QR Plate in the picture on the left.
- Secure the QR Plate to the TH8A with the 4x M6x14mm Screws provided in the QRPro TH8A kit.
- Tighten to the pinch and then 1/16th turn.

IMPORTANT: Do NOT overtighten any of the screws.